

# Northfield Euro Glide II

*Office to Office Coverage... from Task to Executive Seating*



**NORTHFIELD METAL PRODUCTS**

A division of *Leggett & Platt* Ltd.

# Northfield Euro Glide II

## Euro Glide II



EURO GLIDE II PSR TA JBUF BLK 17-4E

### **syn·chro·nize** 'singkrùnlz

v. syn·chro·nized, syn·chro·niz·ing, syn·chro·niz·es  
v.intr.

1. To occur at the same time; be simultaneous.
2. To operate in unison.

The modern styled forward pivot Euro Glide II Synchro-Tilt mechanism has a unique synchronized ride that cradles the occupant as they recline in the chair.

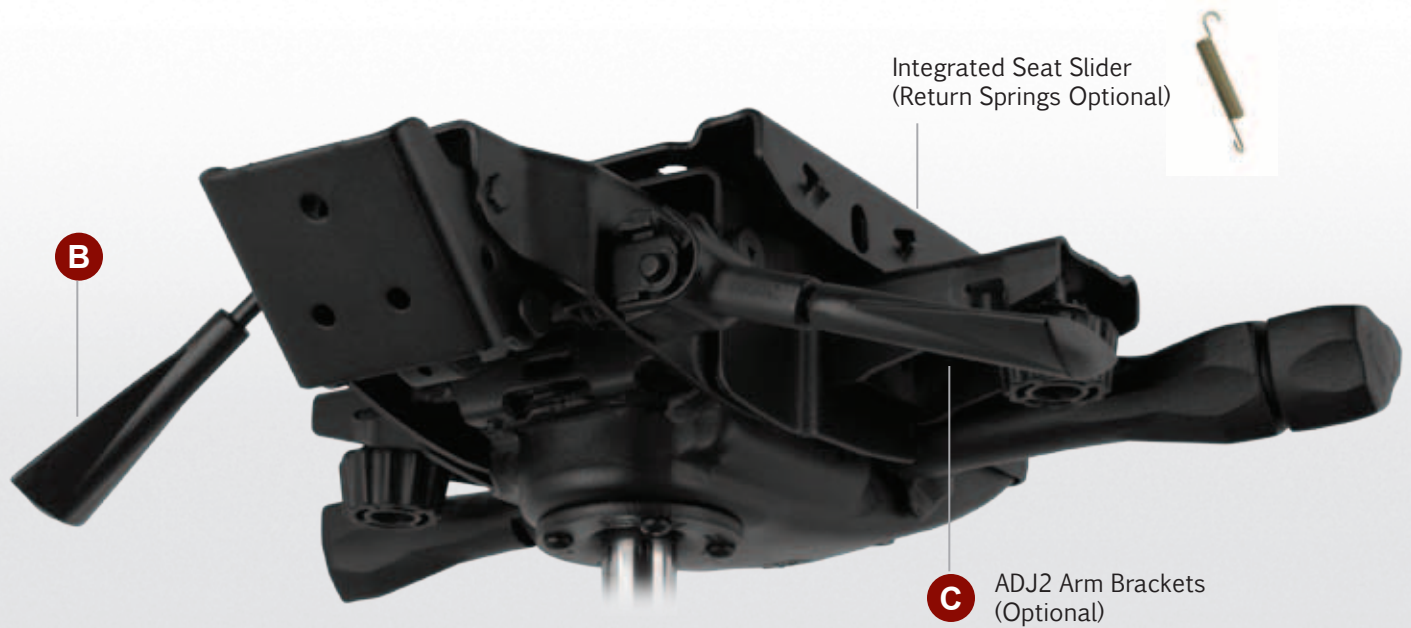
The Euro Glide II features include tri-lobed levers, side tension adjustment, a five position anti-kick lock, seat height adjustment, several separate back adjustment options, and plastic shrouds that streamline the overall appearance.



**Synchronous**



EURO GLIDE II PSR TA JBUF BLK 17-4E W/ CAM ACTIVATED AUTO SEAT SLIDER W/ ARM BRACKETS



EURO GLIDE II PSR TA JBUF BLK 17-4E W/ CAM ACTIVATED AUTO SEAT SLIDER W/ ARM BRACKETS



# Northfield Euro Glide II

## A Separate Back Options



3.00" Euro Back



3.00" Task



18JBUM 3.00"



18M



1875 (Oval)

## B Cam Activated Seat Slider Lever Options



BT Paddle



Pictogram Paddle



UK Paddle



Spoon Paddle



EG Paddle



SG Paddle



S-Knob

## C Arm Bracket Options



AT2 Arm Brackets\*

\* variable locations available by welding in different locations on the seat plate or integrated seat slider

## Optional Fold-Out Crank Style Lever

The Euro Glide II forward pivot synchro-tilt mechanism can be upgraded to a fold out crank style rotary knob. This easily accessed lever has been engineered to provide proper tension adjust throughout the full range of spring tension.



## Specifications

### MECHANISM FEATURES

- TA** Top Activated Seat Height
- PSR** 5 Position Anti-Kick Lock (JBUF Version)  
4 Position Anti-Kick Lock (Separate Back Version)
- HD** Heavy Duty Spring (optional on JBUF / standard on Separate Back)
- Auto Seat Slider** Integrated Automotive Style and Cam Activated Seat Sliders (2.50" of travel seat slider factory installed)

### MECHANISM ANGLES

- Seat** Forward Tilt 2° forward  
Rearward Tilt 8°
- Back** 1° Forward  
20° Rearward
- An optional 0° starting angle is available (1 less locking position forward)

### ARM BRACKETS

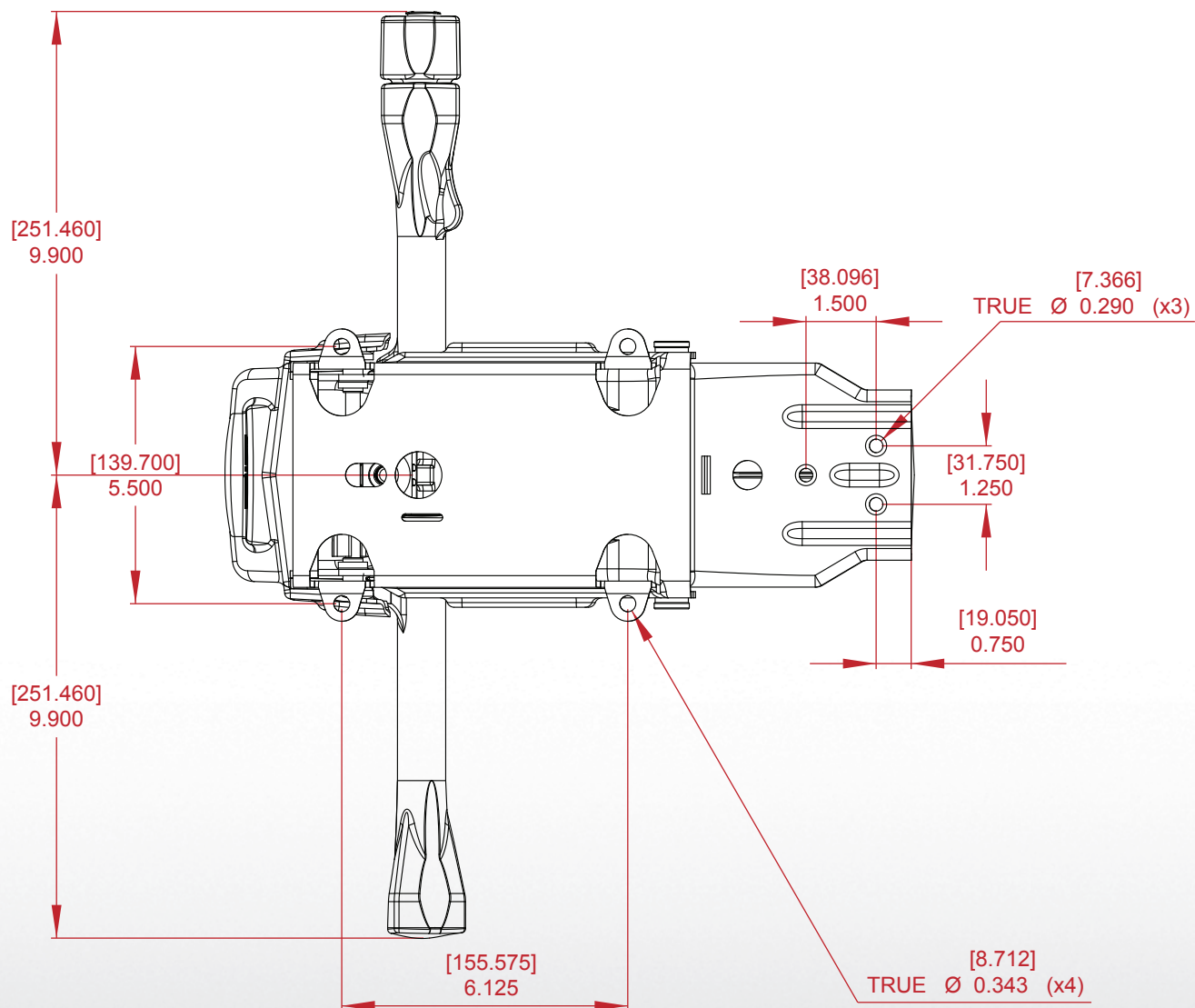
- ADJ2** Adjustable Arm Brackets
- AT2** Fixed Arm Bars

### GAS CYLINDER TAPERS

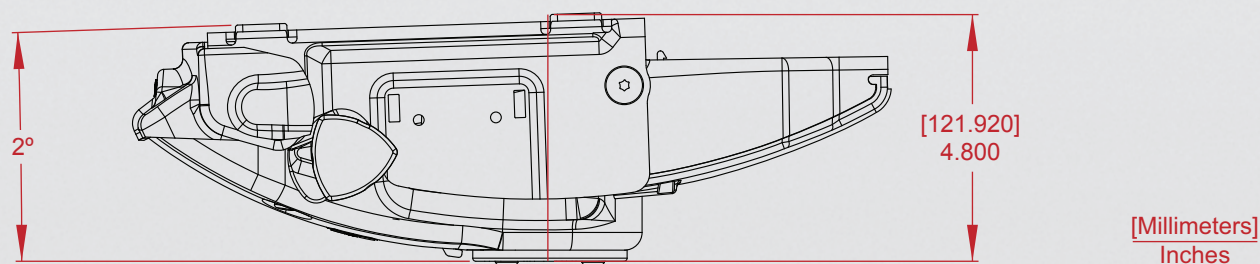
- 17-4E Extruded 17-4 Taper

# Northfield Euro Glide II

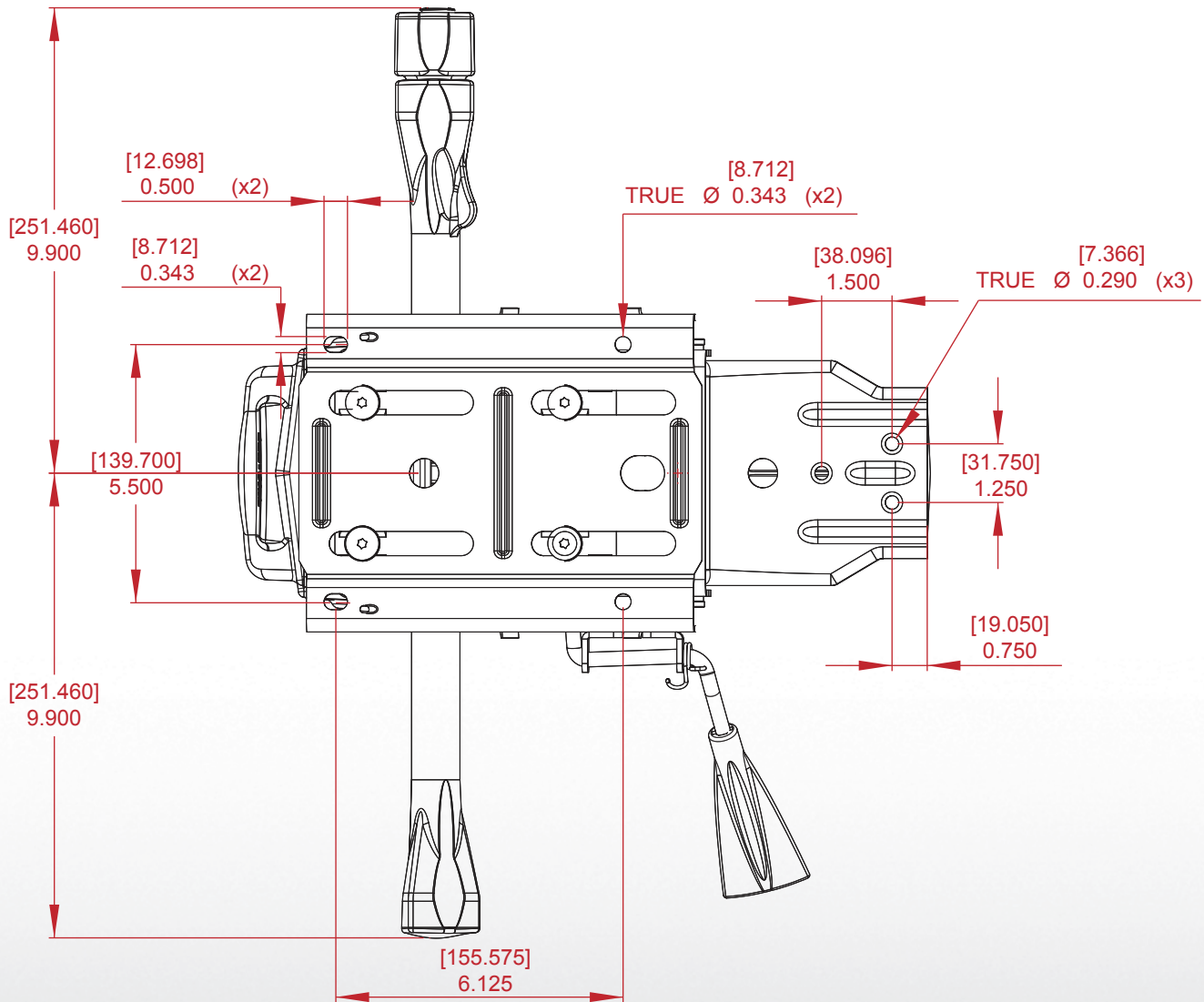
Seat Plate Mounting View



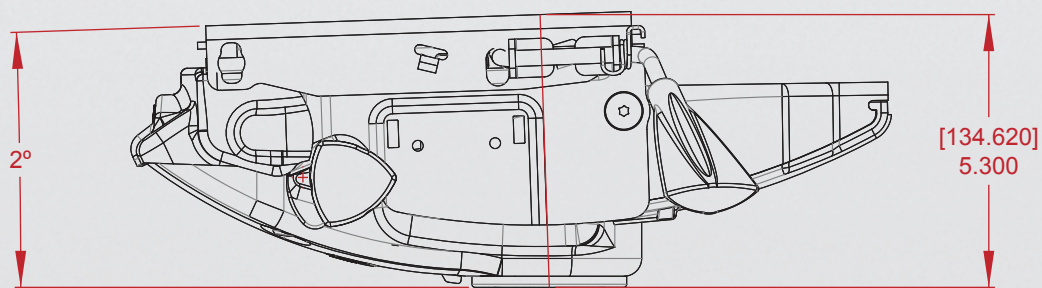
Side View



## Integrated Seat Slider Mounting View



## Side View



[Millimeters]  
Inches





**NORTHFIELD METAL PRODUCTS**

A division of *Leggett & Platt* Ltd.

**Northfield Metal Products Ltd.**  
a division of Leggett & Platt Ltd.

195 Bathurst Drive  
Waterloo, ON N2J 3Z9 CANADA

☎ 519-884-1860  
☎ 1-866-362-9301 (Canada/USA)  
☎ 1-800-362-9301 (International)  
📠 519-884-5476  
✉ [sales@northfieldmetal.on.ca](mailto:sales@northfieldmetal.on.ca)



Manufacturer certifies  
that this product meets  
or exceeds applicable  
ANSI/BIFMA standards.



© 2010 Northfield Metal Products Ltd. The shape of a Northfield Chair Control is a TRADE-MARK of Northfield Metal Products. The shape is your guarantee that you have purchased a genuine, high quality product made by Northfield. Northfield Metal Products Ltd. is a division of Leggett & Platt Ltd. Printed in Canada.