

Fixed Base

We're expanding our horizons beyond the office environment with the introduction of the *fixed base* for courthouse, jury box, casino, and lecture hall use where fixed single pedestal seating is required.

Stability is obtained from a 3/16" thick steel base plate with a welded center post support tube. Variable height adjustment to accommodate different seating applications is available upon request. An outer cover cleans up the overall appearance of the product.

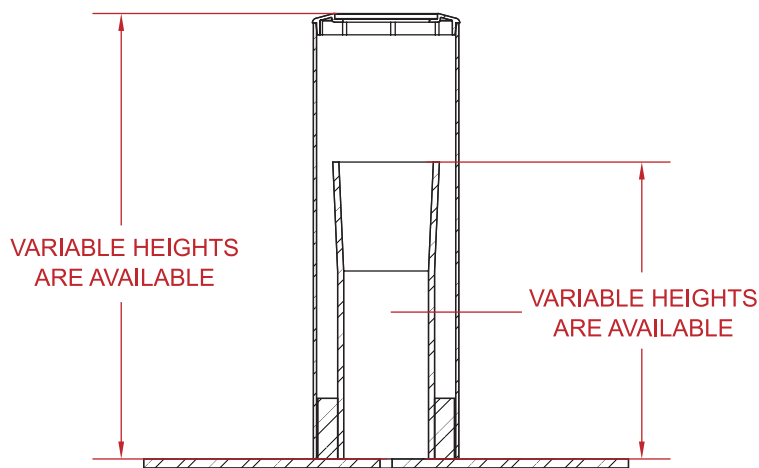
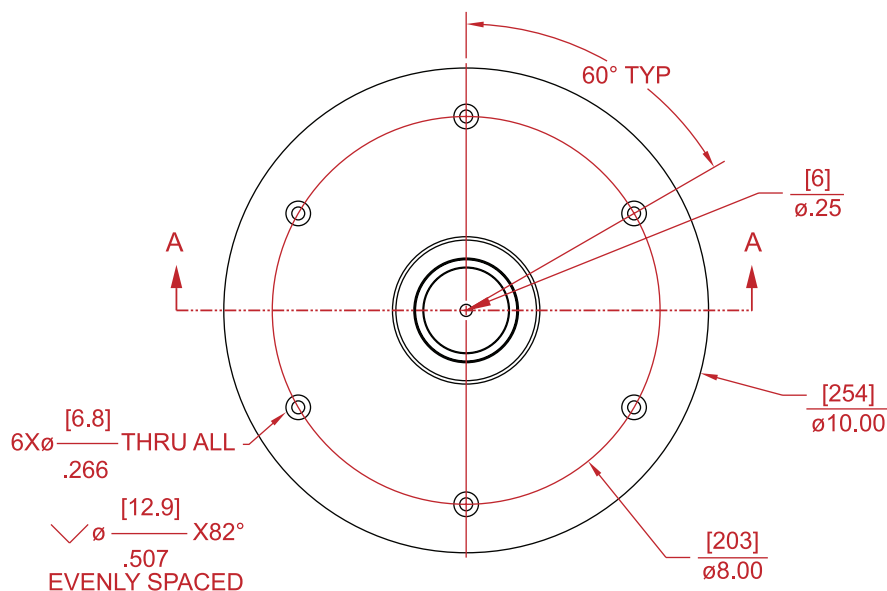
The fixed base from Northfield is available in a variety of finishes including black texture paint, raw, and proprietary customer colours.

The final assembly is then securely bolted to the floor.

Non-Rotational, Auto-Return, and Non-Height Adjustable Columns are available upon request.



**Fixed Base shown
with optional 18"
diameter cover.**



Non-Rotational

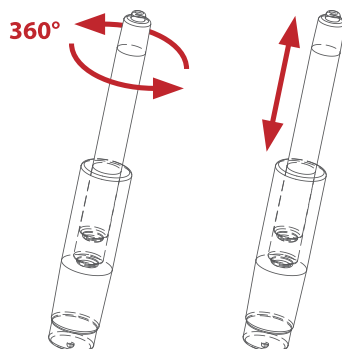
Used when seat height adjustment without swiveling is required.

Auto-Return

Allows a full 360° of swivel in either direction, with the seat automatically returning back to the starting position.

Non-Height Adjustable

Used when swiveling without seat height adjustment is required.



Northfield Metal Products Ltd.

195 Bathurst Drive
Waterloo, ON N2J 3Z9 CANADA
☎ 519-884-1860
☎ 1-866-362-9301 (Canada/USA)
☎ 1-800-362-9301 (International)
☎ 519-884-5476
✉ sales@northfieldmetal.on.ca



NORTHFIELD METAL PRODUCTS

A division of *Leggett & Platt* Ltd.

© 2008 Northfield Metal Products Ltd. The shape of a Northfield Chair Control is a TRADE-MARK of Northfield Metal Products. The shape is your guarantee that you have purchased a genuine, high quality product made by Northfield. Northfield Metal Products Ltd. is a division of Leggett & Platt Ltd. Printed in Canada.



Manufacturer certifies that this product meets or exceeds applicable ANSI/BIFMA standards.

